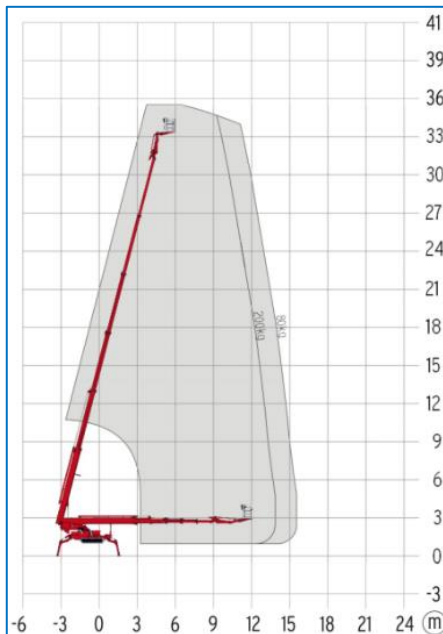




### Features

- Suitable for rough terrain
- User-friendly operating System
- Light weight
- Compact design
- Automatic deployment
- Caterpillar
- Non-marking tracks





## 36m Spide-Platform Type: LEO36T



### Technical data

<b>Maximum working height</b>	<b>35,50 m</b>
<b>Maximum lateral reach</b>	<b>13,90 m</b>
<b>Maximum basket load</b>	<b>200 kg</b>
<b>Maximum stamp width</b>	<b>4,33 m</b>
<b>Maximum lenght</b>	<b>5,30 m</b>
<b>Machine width</b>	<b>1,58 m</b>
<b>Machine height</b>	<b>1,98 m</b>
<b>Total weight</b>	<b>4900 kg</b>
<b>Dimensions basket (LxW)</b>	<b>1,92 x 0,25</b>
<b>Rotation basket</b>	<b>180°</b>
<b>Propulsion</b>	<b>Diesel</b>
<b>JIB</b>	<b>No</b>
<b>Tyre Type</b>	<b>Caterpillar</b>

## MA-BO Hoogwerkers BV

-  [www.ma-bo.info](http://www.ma-bo.info)
-  0316-745613
-  [planning@ma-bo.info](mailto:planning@ma-bo.info)
-  Hengelderweg 8a, 6942 NC, Didam